

Quick Start Guide



Energizing Heat Pump

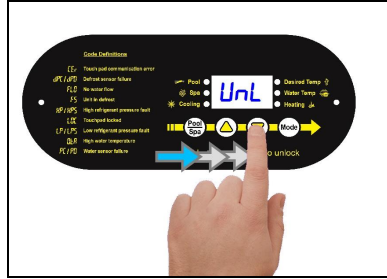
Activate power at external fuse box or the breaker box.

- Controller performs a lamp test.
- The display reads **BBB**.
- Controller then displays as normal.

Display Lock

The heat pump has a display lock to protect against inadvertent setting changes. To activate display and controls, slide finger across the controls as shown from left to right.

- The code **UnL** will briefly appear, then the set temperature or mode will display.
- This is different than a user-lock which requires a pass code. See manual for more information on user locks.
- If more time is needed, press and hold the "Menu" and "Enter / Mode" buttons at the same time. This will disable the display lock for 30 minutes.



Display Panel

Buttons	Description
Display Lock	Sliding your finger across the buttons from left to right will temporarily disable the display lock.
Pool / Spa	Select either the pool or the spa thermostat.
Up Arrow	Used to increase temperature set point and navigate through menu options.
Down Arrow	Used to decrease temperature set point and navigate through menu options.
Mode	Select heat pump's operating mode.

Indicators	Description
Pool	The Heat Pump is referencing the pool thermostat.
Spa	The Heat Pump is referencing the spa thermostat.
Heating	Indicates the unit is heating the water. Please note - the compressor must be operating before this light will illuminate.
Water Temp	Indicates current water temperature.
Desired Temp	Indicates temperature set point is displayed. This is displayed when "UP" or "DOWN" is selected.

Display	Description
75	The heat pump is on and displaying the current water temperature. In this example 75° F is displayed.
FLO	No water flow is detected. The filter pump is off or heat pump is not receiving correct water flow.
OFF	The heat pump has been turned off via the mode selector button or the temperature set point has been lowered below 45° F.
BBB	The control program is initializing. This displays only as power is applied to the heat pump. The program version number will then be displayed.

Setting Operating Mode

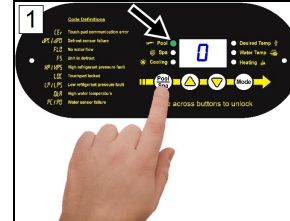
Heat Mode



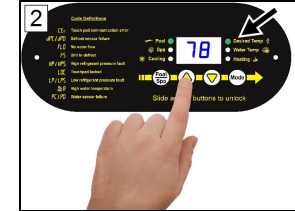
Deactivate Heat Pump



Setting Thermostats



Select "POOL" or "SPA"



Press "UP" or "DOWN" to the desired temperature.



- The heating indicator will illuminate when heating the water.

Initial Heating Recommendations

The following recommendations will reduce the amount of time required to heat a pool. **If unsure of equipment heating capability, review equipment data plate.**

1. Confirm heat pump mode has been set to **HEA**.
2. Set thermostat to desired water temperature.
3. Temporarily override the filter pump's time-clock for continuous operation.
 - This will allow the Heat Pump the time required to heat the water at start-up.
 - After the water has reached the desired temperature, the time-clock can be reset to normal operating time-frames.

Conventional Pool Blankets

A pool blanket can assist the heater to maintain water temperature while significantly reducing heating costs. Conventional blankets, commonly referred to as "Solar Blankets", consist of a thin plastic-like membrane that floats on the water surface. To be effective solar blankets are physically placed over the water surface when the pool is not in use.

⚠ WARNING - Failure to heed the following may result in injury or death.

- Improperly used, Pool-Spa solar blankets can become a drowning risk to people and pets. Solar blankets are not safety covers. They are not designed to support the weight of a person or pet. Never enter a pool until the solar cover is completely removed. Under no circumstances should anyone swim under the blanket. Follow all safety recommendations of the blanket manufacturer.

Pools typically lose 50% of the heat placed in the pool by the heater and / or sunlight.

- Blanketed pools will typically lose only 3° - 4° F of heat per night.
- This is compared to a typical heat loss of 8° - 10° F for a non-blanketed pool.

Liquid Blankets

For those who want to save on heating costs, but do not want the bother and potential dangers of a conventional blanket, a liquid blanket can be a viable alternative. A liquid-blanketed pool on average losses only 30% of its heat gain overnight. However, strong winds can reduce the effectiveness of liquid blankets. Check your pool dealer / supplier for more information on pool blankets and liquid blankets.

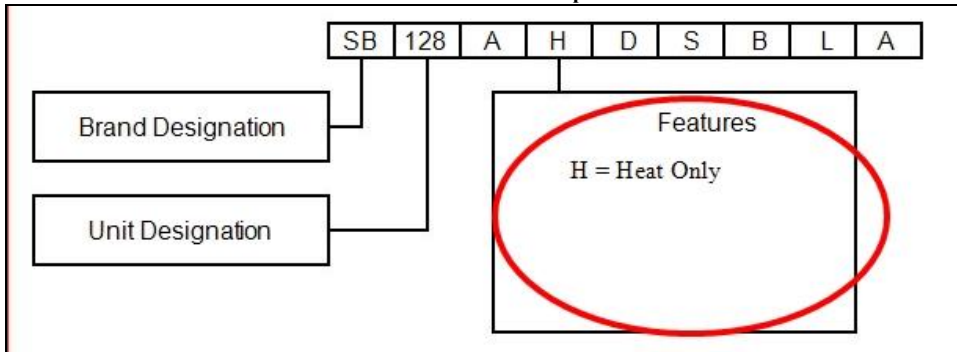
Identifying Model Specifications

1. Find Data Plate - The data plate is usually posted on the side of the equipment or the inside of the heat pump's access plate.
2. Find the model number on the data plate. The first letters and numbers indicate the model type.
3. The complete model number identifies the equipment's features.

Data Plate Example

MINIMUM CIRCUIT AMPACITY	<input type="text"/>	MADE IN THE USA
ELEC. SERVICE: VOLTS	<input type="text"/>	PH <input type="text"/> HZ <input type="text"/>
MAXIMUM TIME DELAY FUSE OR HACR BREAKER	<input type="text"/>	S <input type="text"/>
COMPRESSOR VOLTS	<input type="text"/>	R.L.A. <input type="text"/> L.R.A. <input type="text"/>
FAN MOTOR VOLTS	<input type="text"/>	H.P. <input type="text"/> F.L.A. <input type="text"/>
REFRIGERANT: Circuit - Factory charged	<input type="text"/>	Only oz/Kg <input type="text"/>
Tested to	<input type="text"/>	psig High side / <input type="text"/>
	<input type="text"/>	psig Low side
OUTDOOR UNIT		
MODEL NUMBER		
BAR CODE		
SERIAL NUMBER		
BAR CODE		

Model Number Example



Contacting SunBlazer

For further assistance, please contact the distributor or installing dealer. If unavailable, please contact SunBlazer™ for a service partner in your area.

To better assist you, please have the heat pump model and serial number available.

Website	www.SunBlazerHP.com
Phone	(1) 800-928-0864
Hours	8-5 pm, Eastern M-F

Additional Information

Please go online at www.SunBlazerHP.com for additional information:

- Installation Instructions
- Maintenance Instructions (including winterizing)
- Equipment Specifications
- Troubleshooting